

COE2 *Cab Over Engine*

Power To Get the Job Done



Crane Carrier's COE2 is a work horse with sophisticated engineering and quality that's built to last. Rugged framework, durable cab construction and attention to detail makes this vehicle a good investment with an ergonomic cab environment that will keep your employees healthy and safe.

Check out all the great features we've packed into this vehicle:

- Class 6,7 & 8 GVWR chassis ratings
- Large wide open interior offers more occupant space
- Lower engine cover improves visibility
- Increased visibility with large glass area
- Improved dash and instrumentation layout
- LH, RH or Dual steering configurations
- Large cab door openings offer easy entry and exit
- Tilt-telescoping steering column avail. both sides
- Overhead console with storage space
- Heavy duty front bumper standard
- Enhanced maneuverability with tighter turn radius
- Cummins ISL "G" available, up to 320 HP
- Cummins ISC 8.3 & ISL9 available, up to 345 HP
- 2010 EPA Diesel emission installation, DPF/SCR
- 10 gallon DEF tank with convenient location
- Single Reyco spring, Ridewell tandem, Hendrickson single or tandem rear suspension available





Cab Tilt for Engine Access



Spacious Cab Interior



RH, LH or Dual Steering



10 Gal. DEF Tank



Central Fluid Check

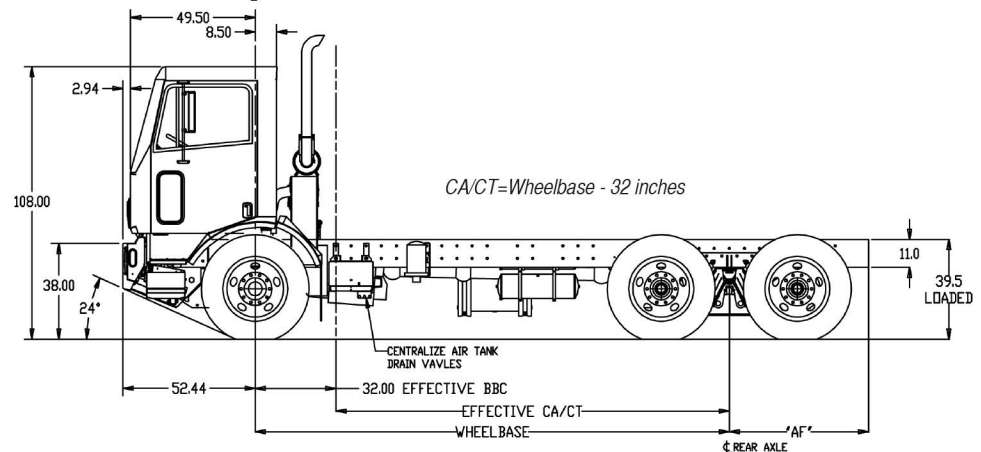
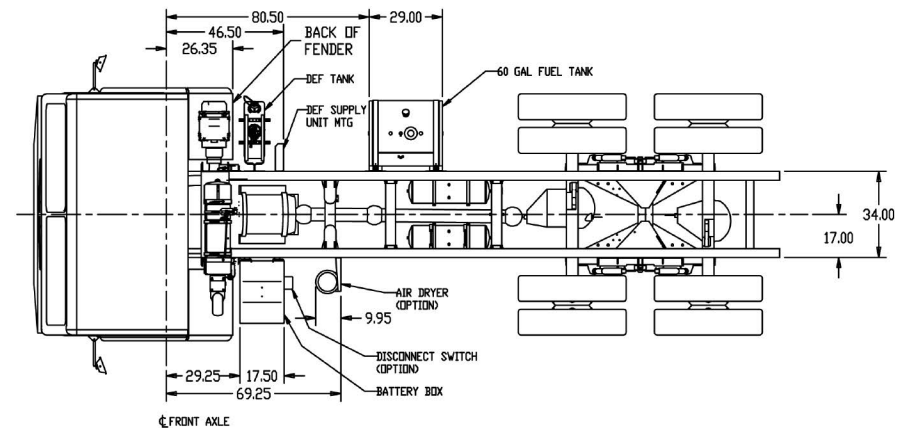


Removable Lower Step

Additional Features and Benefits of the *Crane Carrier COE2*

- **Cummins Engine Protection** 30-second shutdown
- **Transmission** Allison, 3000 / 3500 RDS, 4000 / 4500 RDS
- **4th Generation Shifter** pushbutton w/ Oil Level, Filter, & Clutch condition monitors
- **Steering Wheel** Black 18" soft touch, 2-spoke
- **ABS Brake System** Bendix, 4S/4M or 6S/6M with ATC optional
- **Cab Construction** 95.5" w x 58" d x 66" h, aluminum
- **Cab Insulation** inside cab roof & back wall, outside cab bottom & engine cover
- **Interior Trim** upholstered engine cover, head liner and back wall panels
- **Doors** w/ manual roll-down windows, lower view windows
- **Cab Exterior** Front mud flaps w/ inner fender splash shields & rubber guards
- **Mirrors** LH & RH side 15 x 8", w/ black steel brackets, C-loops & molded mirror head
- **Cab Tilt System** RH manual hydraulic jack mounted behind cab, electric optional
- **Chassis Wiring** Packard "GXL" color coded, loomed wiring, SAE J1939 configured
- **Mini-bus type electrical circuits** automatic reset breakers and relays
- **Plug-in connectors** & water resistant exterior connectors for body wiring
- **Lighting** (2) 5" x 8" halogen headlights, (7) LED ID & marker lights
- **2 LED turn signals** recessed in bumper
- **Dome Lights** Combination, interior map lights w/ selector switch
- **Seats** LH & RH bucket type, 2-way adjustable; black vinyl or cloth

- **Available Seat Options** air ride, lumbar support, arm and head rests
- **Safety Belts** (2) w/ 7" shoulder height adjustment
- **Sunvisors** (2) hinged vinyl full width w/ document keepers



CRANE CARRIER COMPANY
The Refuse Vehicle Specialists